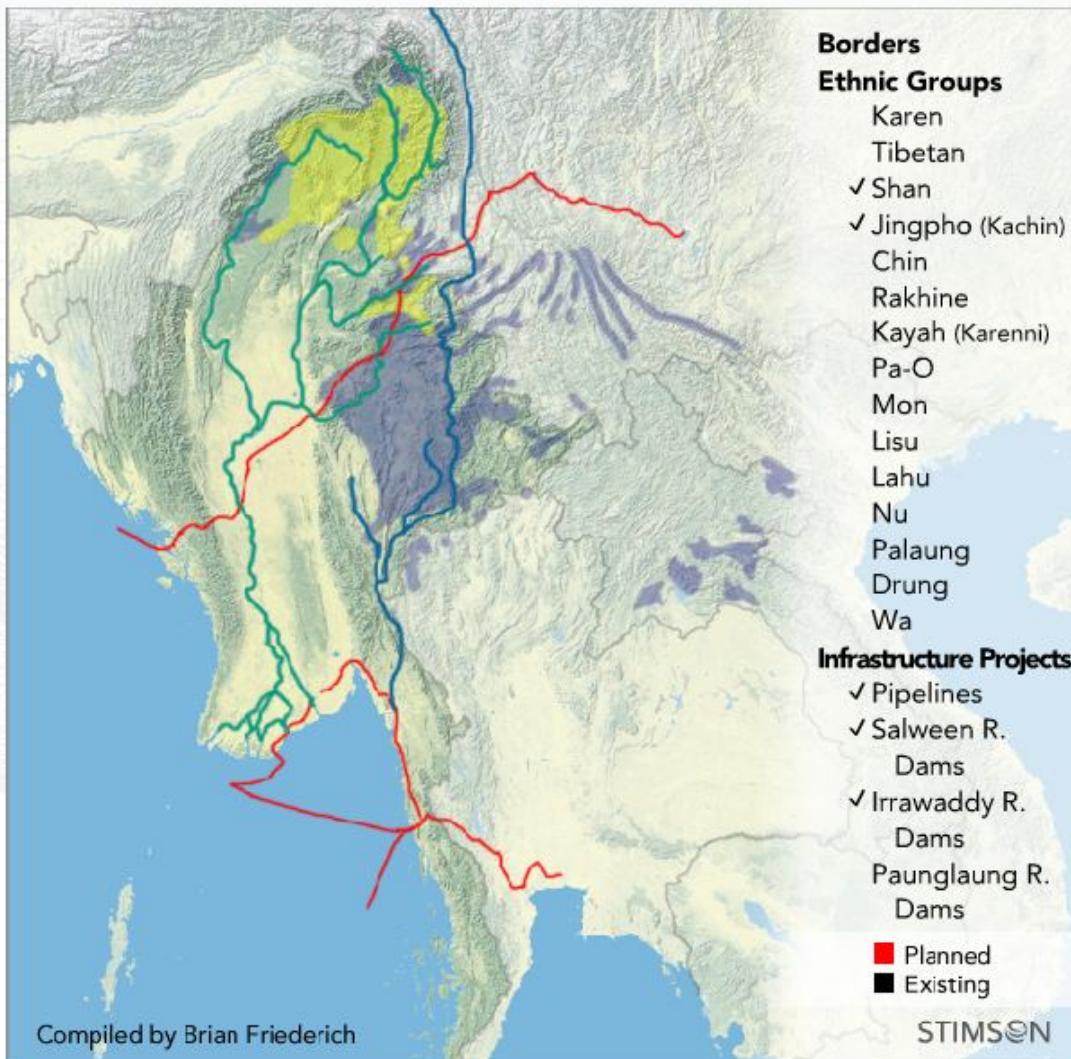


## Interactive map of Burma

# Interactive Myanmar Map

This clickable data map explores the overlap of minority populations and economic infrastructure development in Myanmar (Burma).



[Karen](#) | [Shan](#) | [Jingpho](#) | [Chin](#) | [Rakhine](#) | [Kayah](#) | [Pa-O](#) |

[Mon](#) | [Lisu](#) | [Lahu](#) | [Nu](#) | [Palaung](#) | [Drung](#) | [Wa](#)

A colleague here at the ANU recently pointed out an excellent interactive map of Burma that allows us to see how economic infrastructure development overlaps with the areas of the country where ethnic minority populations tend to live. Provided by The Stimson Centre, the map is available [here](#).

**New Mandala**

New perspectives on Southeast Asia

<https://www.newmandala.org>

---

It is well worth a few minutes of your time and gives a very good appreciation of how the ethnic and economic terrains of Burma interact.